



BusinessAutomatics

Contents

01 About the company

03 Automatic Data System «Visary»

05 Customers

11 Specialized development

Visary ADS modules

13 Enterprise resource planning (ERP)

15 Business project management (BPM)

17 Electronic document management system (EDMS)

19 Corporate communications (Information and communication solution, ICS)

21 Business intelligence (BI)

23 Project management (Project)

25 Geoinformation system (GIS)

27 Customer relationship management (CRM)

29 Supply chain management (SCM)

31 Warehouse management system (WMS)

33 Visary Office

35 Contact information

About the company



Scientific-Production Association «BusinessAutomatics» is a leading developer of system-forming hardware and software complexes and data safety solutions for the military-industrial complex, state structures and the corporate sector of the country.



BusinessAutomatics works with its projects based on the modern international standards and quality criteria following the course of development of IT industry and replicating its expert experience in the sphere of development of highly protected and fail-safe information systems.

Enterprises' technological base, personnel's qualification and the current experience in the sphere of development of unique special software serve as the confirmation of the highest level of professionalism of the team.

Automatic Data System «Visary»



Software solutions developed by BusinessAutomatics are based on own development - complex software platform «Visary».

The platform is designated for effective forming of defined processes of state institutions and business.

Modular architecture of multifunctional and flexible analytical system allows to arrange efficient mechanisms, adapted under infrastructure peculiarities of a particular customer regardless of the field, size of organization and work circumstances.



Multimodularity of the «Visary» platform allows selecting a set of software applications, which solve the needs of the Customer in the most effective way.

Development of a customized software provides the wide possibilities for their implementation under both local problems and within the complex of defined processes.

Customers



Scientific-Production Association «BusinessAutomatics» actively realizes projects for development of automated information systems of various classes for federal and regional state Customers, as well as major commercial organizations.

Creating the systems the specialists of the company carry out the following:

- ✓ Successful realization of projects for organizations and institutes with complex organizational structure and geographically separated network of subdivisions and production bases;
- ✓ Implementation of program solutions without limitation of the number of users and connections ensuring efficient work under high load;
- ✓ Provision of interaction with those program solutions that were already implemented by the Customer by implementation of a unified integration service bus;
- ✓ Transferring source codes and exclusive rights for the developed software to the Customer;
- ✓ No burden to the Customer related to licensing the developed systems;
- ✓ Help during the registration of information systems in all-Russian registers and classifiers.

Customers



Scientific-Production Association «BusinessAutomatics» has vast experience of interaction with federal bodies of state power with development and implementation of complex multifunctional automated systems.



The Ministry of Defence of the Russian Federation



The Ministry of Industry and Trade of the Russian Federation



The Ministry of Economic Development of the Russian Federation



The Ministry of Emergency Situations of the Russian Federation



The Ministry of Sport of the Russian Federation



The Ministry of Education of the Russian Federation



Federal Tourism Agency of the Russian Federation



All-Russian National Front



The Ministry of Digital Development, Telecommunications and Mass Communications of the Russian Federation



Federal Service of Financial Monitoring

Customers



The program solutions of the Scientific-Production Association «BusinessAutomatics» were implemented by all subjects of the Russian Federation.

The company actively cooperates with regional bodies of legislative and executive power in the sphere of development and implementation of data systems. The company has representative offices in many regions of the country.





Open and object-oriented programming language — C# (C Sharp) — and its various modifications were used to develop the information systems based on Visary Platform.

Visary Platform is fully independent from both operation systems and the used DBMS.

Visary was developed based on Open source Net Core 2.0 technology, which ensures efficient work with various server operation systems:



- ✓ **Windows** *Windows Server 2003/2003 R2, 2008/2008 R2, 2012/2012 R2, 2016;*
- ✓ **Linux** *«Astra linux special edition», «Poca», «Suse», «Ubuntu», «Debian», «Redhat»;*
- ✓ **MacOS** *«X».*



This program ensures correct work with the following DBMS:

- ✓ MS SQL
- ✓ Oracle DB
- ✓ MySQL
- ✓ MongoDB
- ✓ DB2
- ✓ NOSQL
- Including DBMS used for special purpose OS —
- ✓ PostgreSQL

All the information solutions based on Visary have open code and ensure the possibility of further modification by various vendors.



INTEGRATION OF PROGRAM SOLUTIONS

Information systems developed on the basis of Visary Platform are successfully integrated with the solutions that had already been integrated in the infrastructure of the Customer.

This platform proved the success of practical interaction with software from SAP, Oracle, Microsoft, IBM etc.

The implemented information systems have the following functionality:

- ✓ Builder used to create connectors for interaction with external information systems;
- ✓ Data import master in the following formats: *.csv, *.xls, *.xml, *.json, *.doc, *.docx, *.odt etc;
- ✓ Integration with ActiveDirectory;
- ✓ USIA integration connector;
- ✓ IEIS integration connector;
- ✓ OGS (WMS, WFS, TMS) integration and import connection;
- ✓ Support of API SOAP/REST;
- ✓ Connectors for integration through NFS, SFTP, SCP, FTP, CIFS etc.;
- ✓ Connectors for integration with POP3, Secure POP3, IMAP, Secure IMAP, SMTP, Secure SMTP postal services;
- ✓ Connectors for integration with SMS Pack payment systems and services;
- ✓ Connectors for integration with IPTEL, SiP, E1, WebRTC;
- ✓ Encryption and enhanced qualified electronic signature, check of integrity of transferred data.

Specialized development



The main direction of work of the Scientific-Production Association «BusinessAutomatics» is the development of information systems according to unique needs of the Customer.

- ✓ During the first stage of project implementation the company's specialists conduct a complex check of actual standardized processes of the Customer and (if needed) perform their sequential re-engineering;
- ✓ Development of customized software based on multifunctional Visary Platform provides broad specter of opportunities of both implementation of information systems according to local goals, and realization of complex solutions to achieve full automaton of business processes;
- ✓ Flexible graphic constructor of standardized WorkFlow processes allows the Customer to correct autonomously basic schemes according to the changing base of regulations and external conjuncture;
- ✓ BusinessAutomatics has high competency in the sphere of unique stylistic design of program solutions. If there is such a need, the information system can be designed according to the approved brand book of the Customer;
- ✓ Solutions of BusinessAutomatics allow unification of disjointed infrastructure of the Customer in a unified information space.

Visary ADC Modules

ERP

ENTERPRISE RESOURCE PLANNING

A complex system of enterprise resource planning is used to achieve automation of organizational and technological processes of establishments with the purpose of further implementation of the most efficient development strategy for every kind of activity, as well as optimization of resources to achieve maximum result.



ERP-systems are developed with due consideration of the special aspects of certain enterprises' function conforming with applied business processes.

ERP Module provides the following functionalities:



Automation of recording, control, analysis and planning processes for all the company profiles;



Integration with local control systems of certain equipment;



Operational and strategic planning of company's activities;



Forming a work schedule, determining the necessity to gather additional resources, control over procurement and financing, management of business processes, systematization of documentation;



Standardization and unification of reports, tracking the timeliness of their provision.

BPM

BUSINESS PROCESS MANAGEMENT

Visual constructor of regulated processes with intuitive graphic interface.



BPM module provides the following functionalities:



Constructor of business processes based on WorkFlow technology with intuitive graphic interface;



Adaptation of the system according to the infrastructure and role policies of the Customer with the possibility of manual correction of the algorithms in case of unique exceptional situations that were not addressed in the standard business logic model;



Correction and creation of new business processes using web-interface without any knowledge of programming languages;



Automatic creation of goals for the operators or startup of subsidiary (enclosed) business processes based on the models of business processes;



Control over execution of business processes and monitoring of deviations from benchmarks;



Instruments for modeling of client interfaces and formation of flexible customer scenarios;

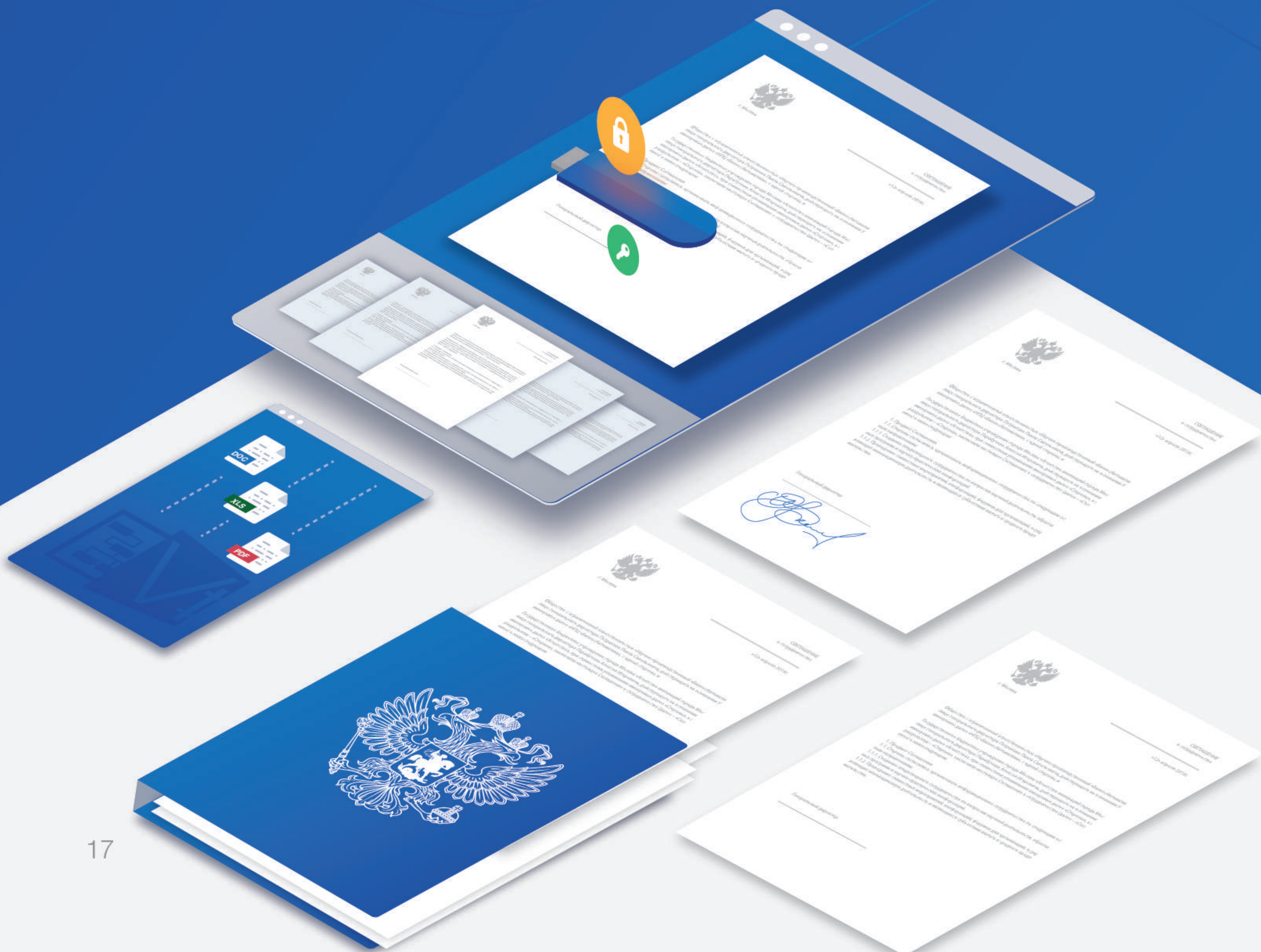


Opportunity of constant KPI monitoring for business processes.

EDMS

ELECTRONIC DOCUMENT MANAGEMENT SYSTEM

This module ensures comprehensive control over electronic document transfer in establishment by systematization of the documents of various types and establishment of a flexible role policy for access management.



EDMS Module provides the following functionalities:



Creation and editing of document using the System directly, optimizing of expenses for purchasing additional license packs;



Keeping internal and external document flow with legal meaning with support of enhanced qualified electronic signature and choice of addressees from cumulative lists;



Creation of unlimited numbers of structured books of reference and registers with convenient system of search and filtration according to the required attributes;



Automatic mail dispatch to target categories of customers;



Goal setting with the indication of responsible team members and determination of approval type (parallel or sequential) on each stage;



Systematization of documents and creation of a unified data archive with convenient navigation system;

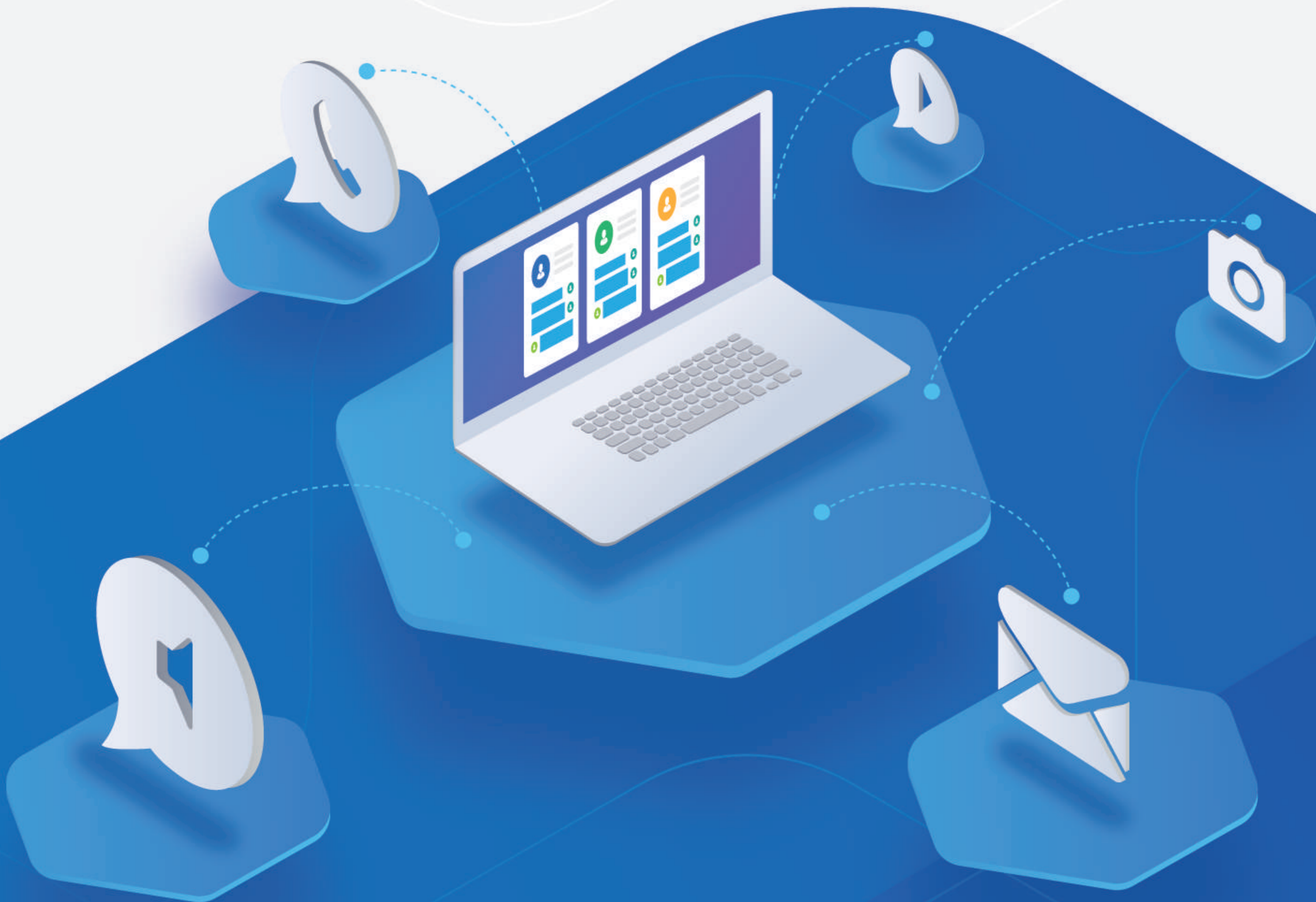


Possibility to use bar codes for incoming and outgoing documents.

ICS

CORPORATE COMMUNICATIONS

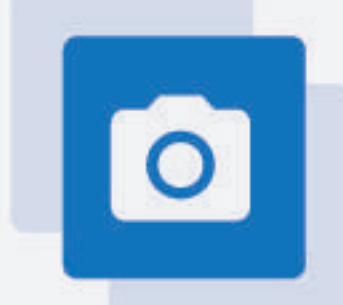
Information and communication solution ensures fast transfer of various types of data within a unified environment, significantly increasing the quality and speed of information transfer with high level of its protection.



ICS Module provides the following functionalities:



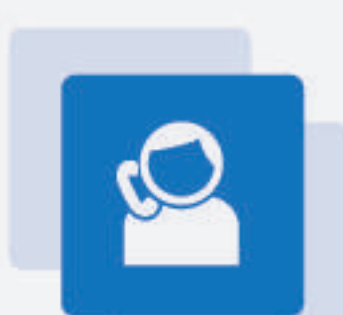
Organization of safe communication using integrated IPTEL (VoIP technology), integration with external ATS using SIP protocol;



Protected exchange of text messages, photo and video content, documents of various types;



Safe communication using chats to exchange short text messages with the possibility to create closed groups with limited number of members;



Protected communication using audio and video conference calls with big number of users and without regard to their geographic location;



Work of protected postal server with exchanging e-mail with any external e-mail services;



Protected virtual database for common use with versions support and the possibility of encryption, as well as flexible access management policy.

BI

BUSINESS INTELLIGENCE

Business intelligence system within the institution's activity allows carrying out a complex assessment of big amount of unstructured data in short terms according to various parameters of establishment's functions for further optimization of work processes.



BI Module provides the following functionalities:



Presence of an understandable report creator with broad specter of variations for interactive visualization of data with subsequent uploading to all widespread data formats;



Broad specter of opportunities of OLAP-analysis for multidimensional assessment of big amount of unstructured data;



Using the results of analytic reports as a basis for effective management decision making, as well as for strategic planning;



Tracking dynamics of establishment work's parameters, development of models used to correct business processes in case external attributes are changed.

Project

PROJECT MANAGEMENT

Project management allows conducting complex management of operation within the scope of realization of goals for various projects and the opportunity to assess the resource potential, to form plans and to assess the actual operation values.



Project Management Module provides the following functionalities:



Network and calendar planning of works;



Using linear Gant Charts and network charts of work interaction;



Establishing multi-level complex hierarchy of projects;



Flexible instrument used to create project conveyor using Workflow;



Broad specter of possibilities that allows creating role policies within the framework of project management;



Models of resource and financial planning, forming the register of objects in the critical path zone;



Realization of Kanban projects.

GIS

GEOINFORMATION SYSTEM

Geoinformation system allows visualization of unlimited number of geographic objects (data coordinated in space) on various base maps and tracking their actual status in real time.



GIS Module provides the following functionalities:



Creating unlimited number of geographic information layers;



Work with widespread cartographic bases (OpenStreetMap, GoogleMaps, Yandex.Maps, ArcGIS etc.);



Creation of interactive electronic archive of geographically distributed objects with dynamic distribution of attributes;



Support of polygonal, dotted and graph clustering of objects for work with Big Data;



Flexible instruments of analysis used to create routes, prognoses, as well as to assess risks;



Possibility of imaging of objects with dynamic geographical position change.

CRM

CLIENT RELATIONS MANAGEMENT

CRM-system allows systematization of all information about the base of partners and clients for further planning of events for increasing the efficiency of cooperation and the level of sales.



CRM Module provides the following functionalities:



Complex systematization of detailed information about partners and clients;



Registration of full history of relations with the client with the opportunity of retrospective analysis;



Integration with IP-TEL, postal services and widespread messengers;



Analysis of purchase funnel and KPI of the employees using actual data;



Flexible instruments of creating analytic reports.

SCM

SUPPLY CHAIN MANAGEMENT

Our supply chain management software «Visary SCM» is an open-source, web-driven, role-based system, that provides users with helpful services and consultations to help improve and optimize their transportation and supply chain networks.

Visary SCM delivers a comprehensive suite of solutions to its users within a single business platform based on service-oriented architecture.



Visary SCM include:



Inventory management - for tracking and managing the availability of raw materials, stocked goods or spare parts. This feature can also help with asset management, barcode integration and future inventory and price forecasting;



Order management - for automating purchase order processes. For example, generating and tracking purchase orders, scheduling of supplier deliveries, and creating pricing and product configurations;



Logistics and shipping status - for coordinating transportation channels, improving delivery performance and boosting customer satisfaction. Warehouse management features can help with storage optimisation, labelling, labour management and more;



Forecasting - for anticipating customer demand and planning procurement and production processes accordingly. Efficient forecasting can help remove the need to buy unnecessary raw materials or store excess finished goods on warehouse shelves, hence reducing costs.



Return management - for inspection and handling of damaged or faulty goods, and processing of refunds or insurance claims.

The system could provide more functionality including procurement, warehousing and sales as additional components of solution. It delivers:

- ✓ Sales forecasting and demand planning;
- ✓ Inventory planning and replenishment;
- ✓ Warehouse management solution with advanced capabilities;
- ✓ CRM, sales order management and customer invoicing to capture all transactions and interactions from opportunity to cash;
- ✓ SRM, purchase order management, arrival and inspection for a complete procurement solution.

WMS

WAREHOUSE MANAGEMENT SYSTEM

Warehouse management system effectively provides automation of all technological warehouse processes for complex increase of work efficiency and prevention of inappropriate expenses.



WMS Module provides the following functionalities:



Support of the relevance of reference guides and information regarding the current condition of the warehouse;



Control of receipt and dispatch of material and technical objects of value;



Assessment of the current number of goods kept at the warehouse with subsequent forming of purchase demands;



Calendar planning of delivery of material and technical objects of value with strict expediting;



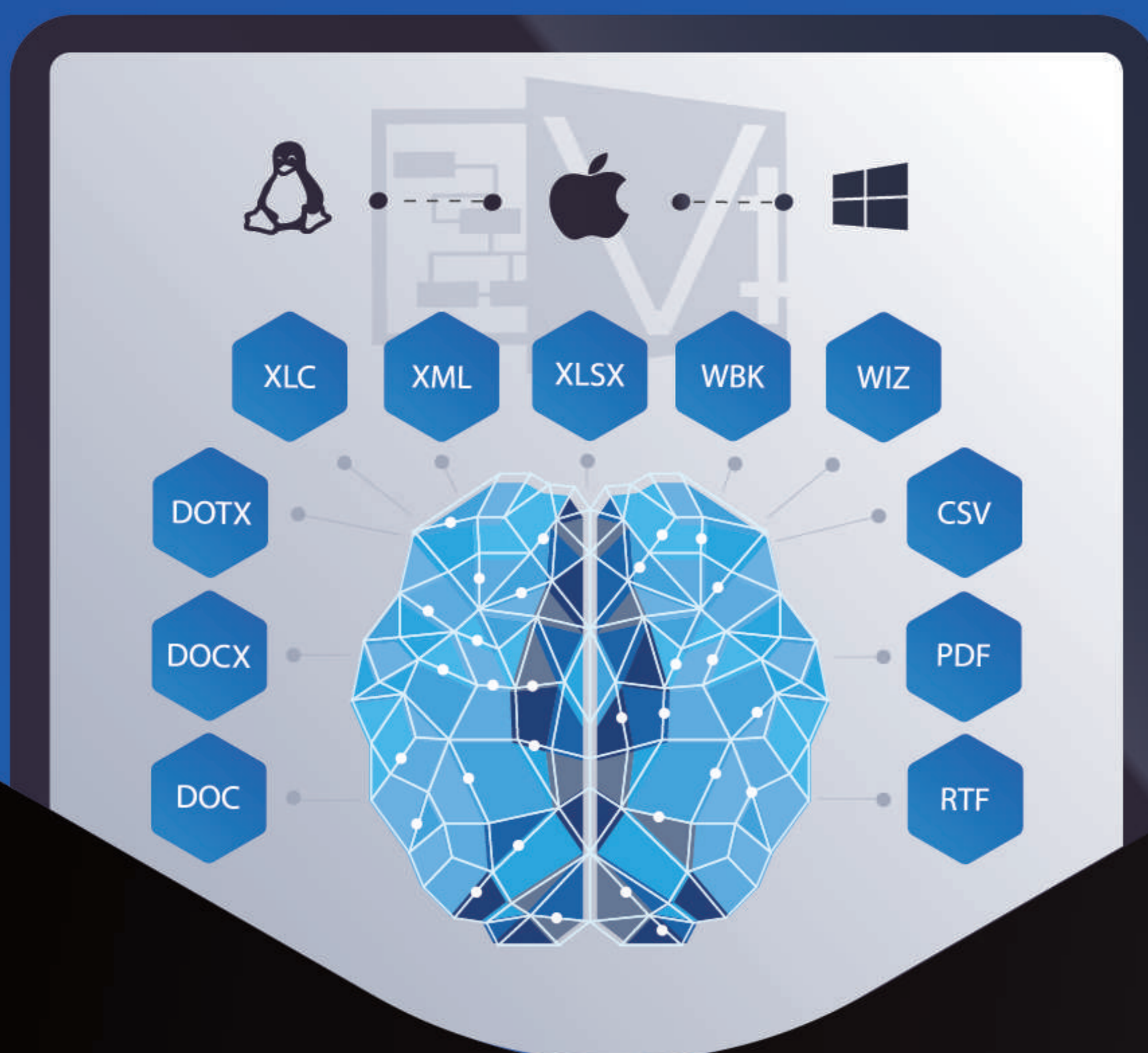
Automation of process of optimal goods distribution at the warehouse;



Approval of associated documentation using enhanced qualified electronic signature.

Visary Office

A complex solution that includes the full required set of office programs and instruments for effective work of government bodies and business.



The components of «Visary Office» have extended functional opportunities for creation and editing of:

- ✓ Text documents;
- ✓ Electronic tables;
- ✓ PDF-documents.



«Visary Office» also includes work with a postal service and protected cloud storage.



Information solution ensures complex protection of information from viruses and hacks using Russian means of cryptographic protection.

«Visary Office» has the following set of advantages:



Supports the basic functions of a standard office package;



Works with all widespread data formats;



Has conventional and intuitive interface convenient and familiar for the users;



Supports document version control;



Allows performing joint correction of documents;



Does not have any license limitations;



Correctly functions both on stationary devices and using web browsers;



Supports work with qualified electronic signature.

Contact information





Address

1-st Derbenevskiy per., d.5, str. 2, Moscow, Russia, 115114



Phone numbers

+7 (800)100-93-69

+7 (495) 221-29-65



E-mail

info@npc.ba



Website

npc.ba

